

Windsor Locks Train Station



Windsor Locks

The Connecticut Department of Transportation (CTDOT) has designed and started construction on a new station in Windsor Locks. This station will include a single high-level platform, a multiuse trail with connections to the Canal Trail via Bridge Street, parking, and other amenities similar to the newly constructed Hartford Line Stations.

The 510 foot-long platform will be fully ADA compliant, with level-boarding from every train car. The station is being relocated in downtown Windsor Locks. The project also includes reconstruction of Route 159, closing of Church Street at Route 159, and improvements to nearly 1.5 miles of mainline track. This project also complements the town's new Transit Oriented Development (TOD) Area in downtown Windsor Locks and the development at Montgomery Mills.



SCHEDULE & COST

START CONSTRUCTION
Summer 2022

END CONSTRUCTION
Summer 2025

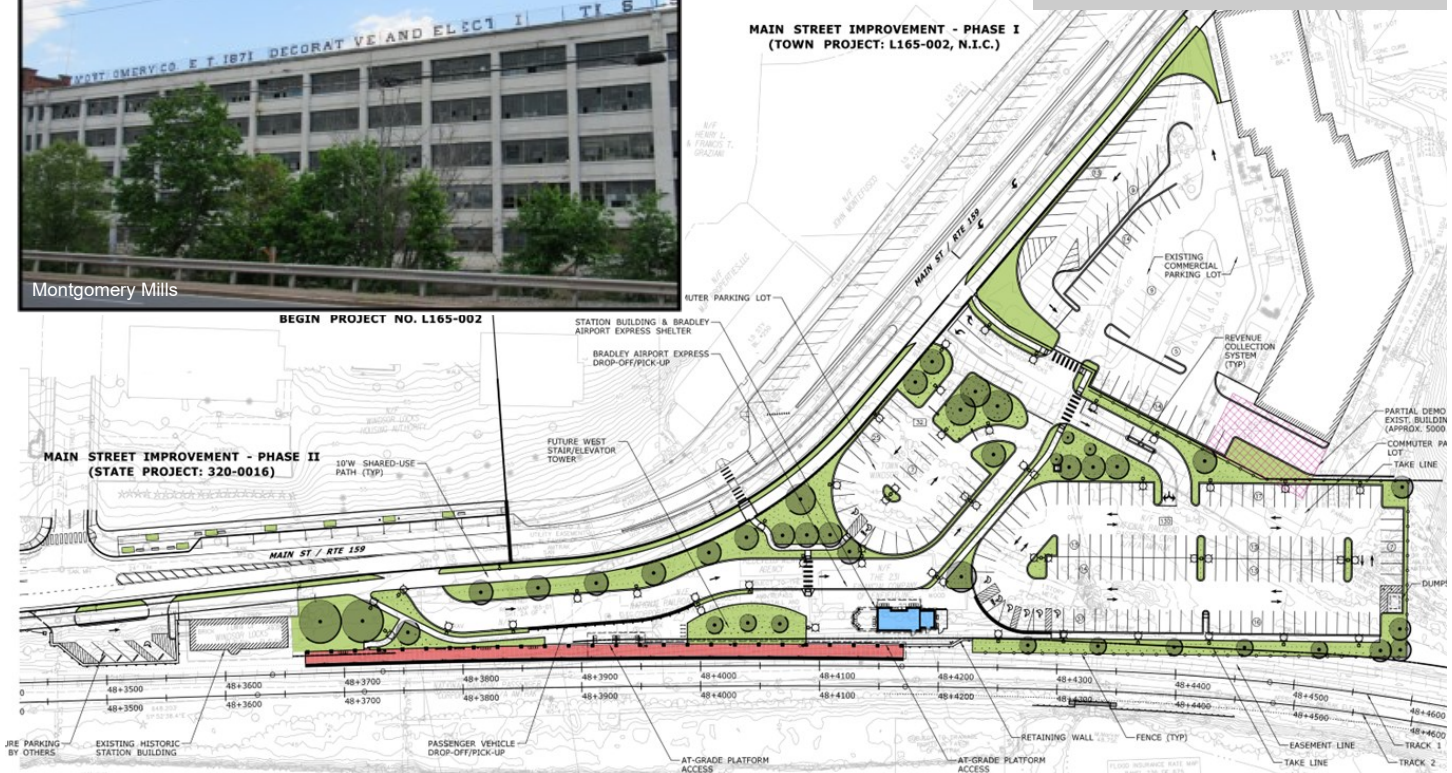
PROGRAM FUNDING
\$59.11 million state bonding
\$17.49 million CRISI grant
\$10.54 million through Amtrak

FUNDING BREAKDOWN
\$32.34 million rail station
\$54.80 million track and yard

TOTAL COST
\$87.14 million



MAIN STREET IMPROVEMENT - PHASE I
(TOWN PROJECT: L165-002, N.I.C.)



Proposed Windsor Locks Station Plan

September 2022

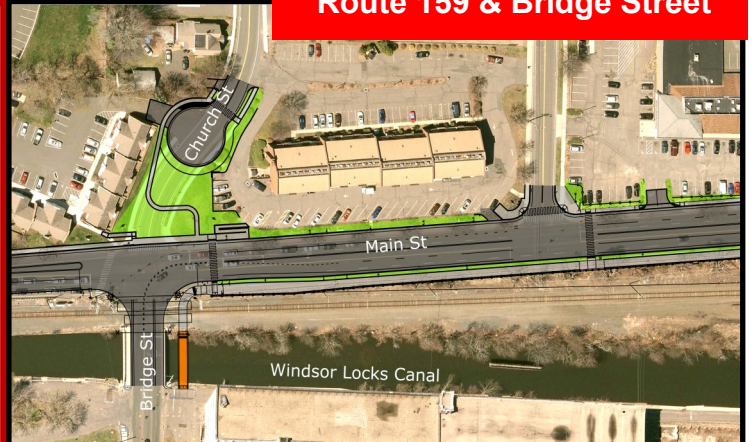
Windsor Locks Train Station



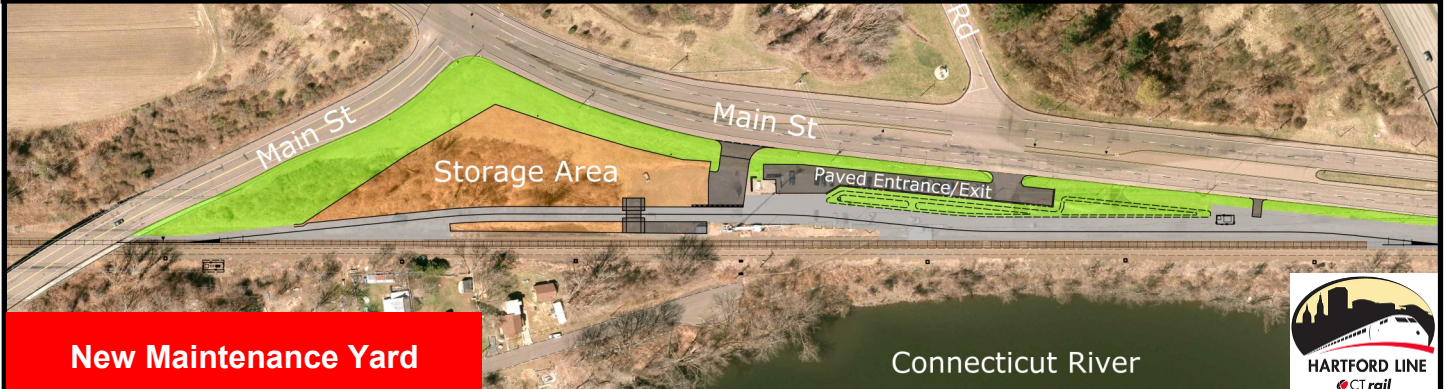
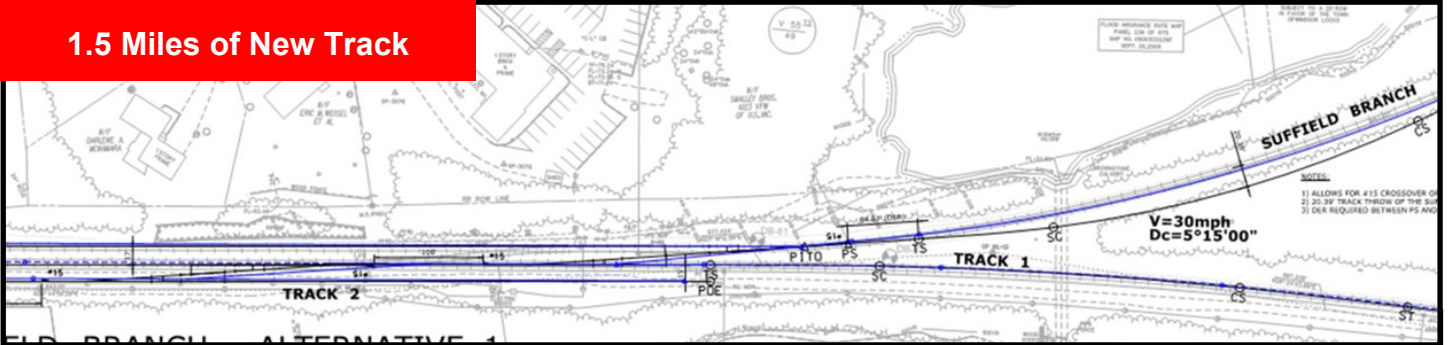
Project Elements

- RECONSTRUCT ROUTE 159 FROM BRIDGE STREET TO THE STATION
- 1.5 MILES RECONSTRUCTION OF AMTRAK MAIN LINE
- RECONSTRUCTION OF A FREIGHT INTERLOCKING
- RELOCATE EXISTING STATION TO DOWNTOWN
- BUS CONNECTIONS TO BRADLEY AIRPORT
- CONSTRUCT A NEW MAINTENANCE OF WAY (MOW) YARD AT THE FORMER STATION SITE

Route 159 & Bridge Street



1.5 Miles of New Track



New Maintenance Yard

Connecticut River

